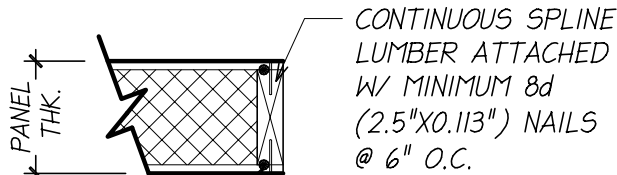


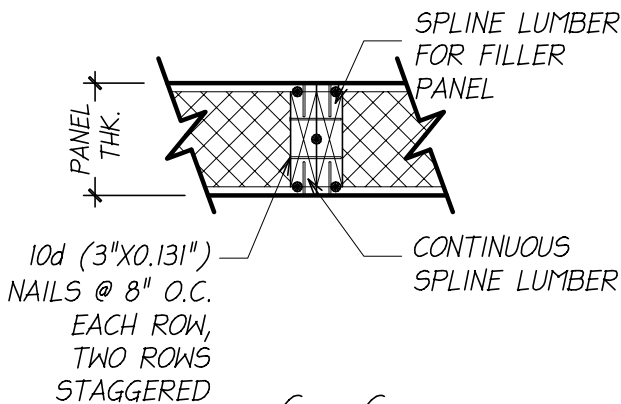


A - A

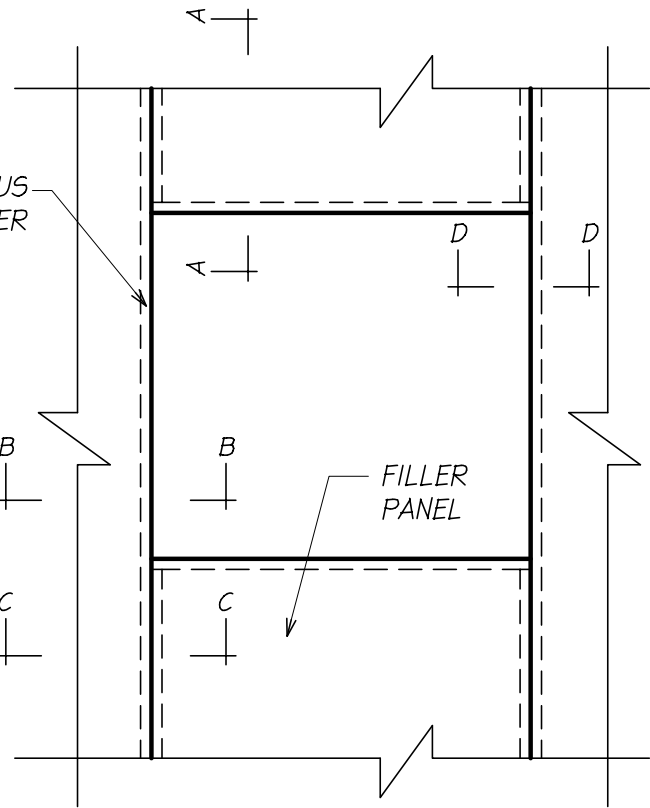


B - B

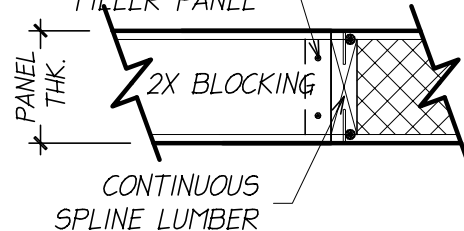
INSULSPAN APPROVED
SEALANT AT LOCATIONS
SHOWN



C - C



(2) 16d (3.5"x0.135") NAILS
INTO SPLINE LUMBER FOR
FILLER PANEL



D - D

NOTES:

1. THE DETAIL IS TO BE USED WITH INSULSPAN CONSTRUCTION DRAWINGS AND INSTALLATION GUIDE. REFER TO INSULSPAN CONSTRUCTION DRAWINGS FOR FINAL NAIL AND SCREW SCHEDULES.
2. ALL BUILDING COMPONENTS USED IN CONJUNCTION WITH THIS DETAIL SHALL BE IN COMPLIANCE WITH LOCAL CODE REQUIREMENT.



SKYLIGHT OPENING

SCALE: N.T.S.

LAST UPDATE: JUNE 22, 2010

400.15